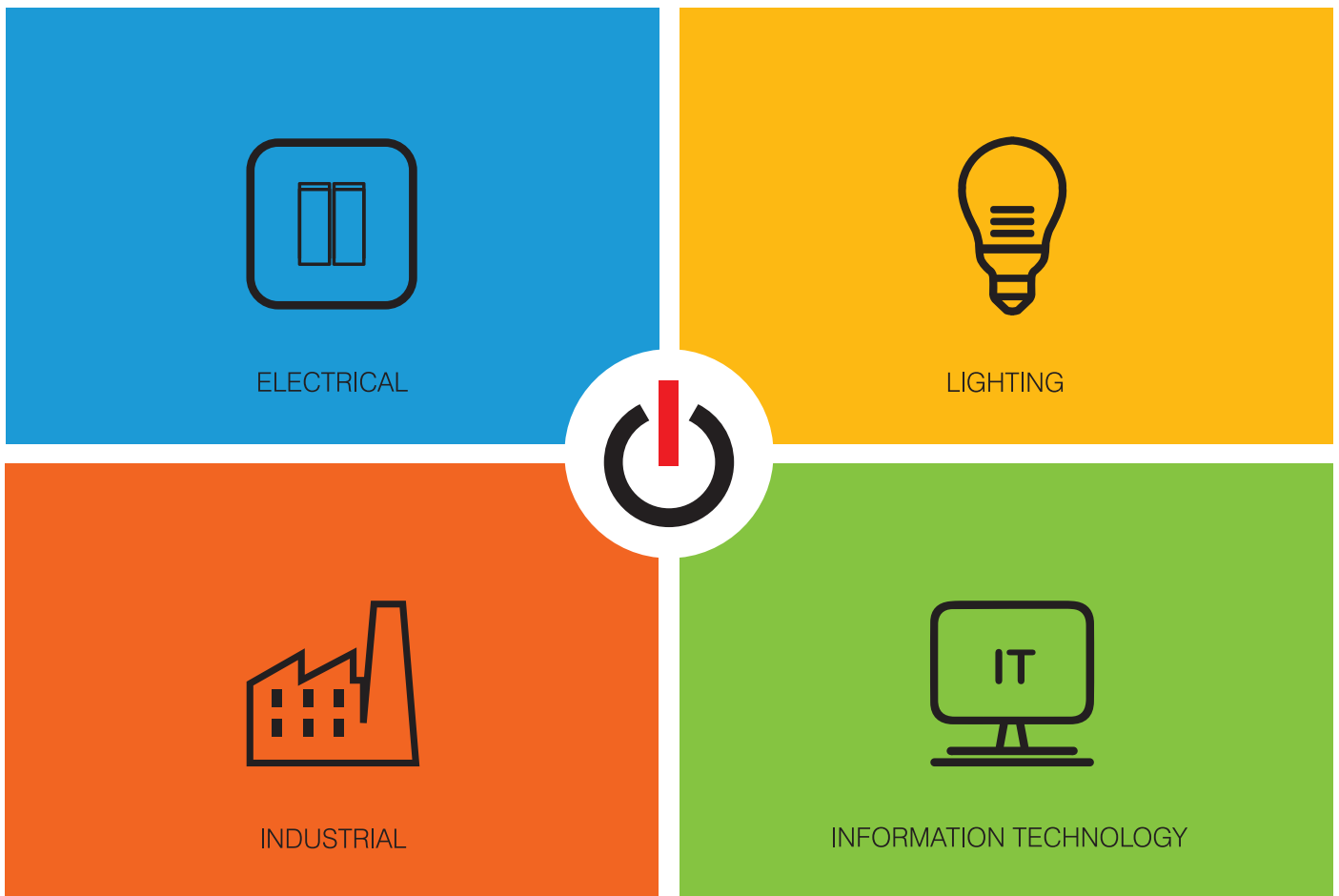




Experience lighting in a whole new light.  
Outdoor Lighting Catalogue

# 35 SBU's Converge into Four Verticles to Create one Super Power

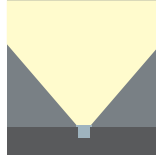


<b>About us</b>	<p><b>Our Vision</b> "To create a billion dollar global electrical brand"</p>	<p><b>Our Mission</b> "To add more to life with electricity"</p> <p>At Orel Corporation, the makers of Orange Electric, we believe that more can be added to life with electricity. We put together the best human ingenuity with the world's leading technology to solve your toughest challenges with electricity and to save energy. Today, we are lighting up one country at a time. We are not just dreaming about it. With every passing day, we make it happen. One day soon, we will switch on the world.</p>
	<p><b>Credo</b> No matter how lucrative it may sound, we shall never engage in businesses that deals in arms and ammunition, alcohol and tobacco, livestock, gambling or any other business that undermines one's social values.</p>	
	<p><b>Our Culture</b> At Orange Electric, we value innovation and technology. But we place a higher values in making our people better human beings. Good old fashioned values like being simple, honest and straight forward will take you a long way with us.</p>	



## Floor Recess Uplight

Body and bracket in oxidized aluminium  
 Tempered clear glass diffuser with silicone gasket  
 External electronic driver



h(m)	D(m)	Em(lx)
1.0	0.4	191
2.0	0.8	48
3.0	1.2	21

<b>V</b> 4V	<b>IP</b> 65	<b>CRI</b> ≥80	 Clear	 LED	<b>PF</b> ≥0.5
----------------	-----------------	-------------------	--	--	-------------------

## Specification

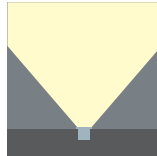
Model No	Power	Lumens	CCT	Beam Angle	Cut-Out	Dimensions	Finish
766-1001	1W	72	3000K	20°	Ø28	Ø40X50mm	Silver



## Floor Recess Uplight

---

Body in aluminium with installation Sleeve  
 Tempered clear glass diffuser with silicone gasket  
 Internal electronic driver



h(m)	D(m)	Em(lx)
1.0	0.5	242
2.0	1.0	61
3.0	1.5	27

<b>V</b> 230V	<b>IP</b> 65	<b>CRI</b> ≥80	 Clear	 LED	<b>PF</b> ≥0.5
------------------	-----------------	-------------------	--	--	-------------------

## Specification

---

Model No	Power	Lumens	CCT	Beam Angle	Cut-Out	Dimensions	Finish
766-1021	1W	68	3000K	28°	125*140	L125 x W125 x H145 mm	Silver



## Floor Recess Uplight

---

Body in aluminium with installation Sleeve  
 Tempered clear glass diffuser with silicone gasket  
 Internal electronic driver



h(m)	D(m)	Em(lx)
1.0	0.4	776
2.0	0.9	194
3.0	1.3	86

<b>V</b> 230V	<b>IP</b> 67	<b>CRI</b> ≥80	 Clear	 LED	<b>PF</b> ≥0.5
------------------	-----------------	-------------------	--	--	-------------------

## Specification

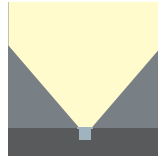
---

Model No	Power	Lumens	CCT	Beam Angle	Cut-Out	Dimensions	Finish
766-1041	3W	175	3000K	26°	Ø117*102	Ø125 x 105mm	Silver



## Floor Recess Uplight

Body in aluminium with installation Sleeve  
 Tempered clear glass diffuser with silicone gasket  
 Internal electronic driver



h(m)	D(m)	Em(lx)
1.0	0.4	776
2.0	0.9	194
3.0	1.3	86

<b>V</b> 230V	<b>IP</b> 67	<b>CRI</b> ≥80	 Clear	 LED	<b>PF</b> ≥0.5
------------------	-----------------	-------------------	--	--	-------------------

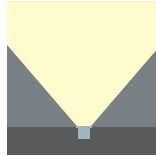
## Specification

Model No	Power	Lumens	CCT	Beam Angle	Cut-Out	Dimensions	Finish
766-1061	3 X 2W	270	3000K	25°	Ø125*140	L125 x W125 x H145 mm	Silver



## Floor Recess Uplight

Body in aluminium with plastic installation Sleeve  
Tempered clear glass diffuser with silicone gasket  
Internal electronic driver



h(m)	D(m)	Em(lx)
1.0	0.4	2101
2.0	0.9	525
3.0	1.2	233

<b>V</b> 230V	<b>IP</b> 67	<b>CRI</b> ≥80	 Clear	 LED	<b>PF</b> ≥0.5
------------------	-----------------	-------------------	--	--	-------------------

## Specification

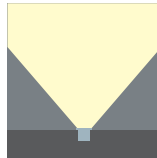
Model No	Power	Lumens	CCT	Beam Angle	Cut-Out	Dimensions	Finish
766-1081	6W	416	3000K	23°	Ø110*125.5	Ø120×128mm	Silver



## Floor Recess Uplight

---

Body in aluminium with installation Sleeve  
 Tempered clear glass diffuser with silicone gasket  
 Internal electronic driver



h(m)	D(m)	Em(lx)
1.0	0.4	3538
2.0	0.8	885
3.0	1.2	393

<b>V</b> 230V	<b>IP</b> 67	<b>CRI</b> ≥80	 Clear	 LED	<b>PF</b> ≥0.9
------------------	-----------------	-------------------	--	--	-------------------

## Specification

---

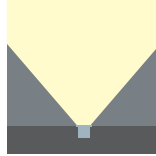
Model No	Power	Lumens	CCT	Beam Angle	Cut-Out	Dimensions	Finish
766-1101	24W	905	3000K	30°	Ø231*176.5	Ø240 x H175mm	Silver





## Floor Recess Uplight

Body in aluminium with installation Sleeve  
 Tempered clear glass diffuser with silicone gasket  
 Internal electronic driver  
 Aluminium reflector

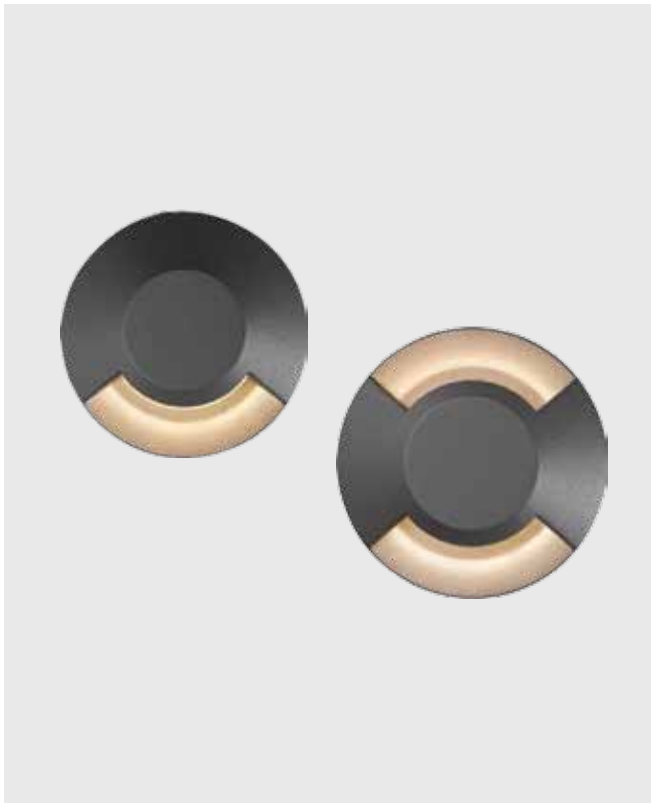


h(m)	D(m)	Em(lx)
1.0	2.9	1577
2.0	5.8	394
3.0	8.7	175

<b>V</b> 230V	<b>IP</b> 67	<b>CRI</b> ≥ 80	 Tempered	 LED	<b>PF</b> ≥ 0.9
------------------	-----------------	--------------------	---	--	--------------------

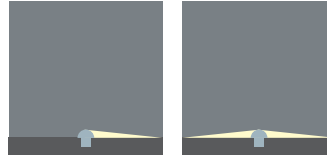
## Specification

Model No	Power	Lumens	Cut-Out	Beam Angle	CCT	Dimensions	Finish
776-1802	20W	2100lm	NA	Wide beam	3000K	710 X 140 X 97mm	Aluminium
776-1806	20W	2100lm	NA	Wide beam	3000K	1310 X 140 X 97mm	Aluminium
776-1801	20W	2100lm	NA	Wide beam	4000K	710 X 140 X 97mm	Aluminium
776-1805	20W	2100lm	NA	Wide beam	4000K	1310 X 140 X 97mm	Aluminium



## Floor Recess Washlight

Body in die-cast aluminium with plastic installation sleeve  
 Clear polycarbonate diffuser with silicone gasket  
 Internal electronic driver



h(m)	D(m)	Em(lx)
1.0	0.2	1
2.0	0.4	0
3.0	0.6	0

h(m)	D(m)	Em(lx)
1.0	0.2	8
2.0	0.4	2
3.0	0.6	1

h(m)	D(m)	Em(lx)
1.0	0.2	12
2.0	0.4	3
3.0	0.6	1

<b>V</b> 230V	<b>IP</b> 67	<b>CRI</b> ≥80	 Clear	 LED	<b>PF</b> ≥0.9
------------------	-----------------	-------------------	--	--	-------------------

## Specification

Model No	Power	Lumens	CCT	Beam Angle	Cut-Out	Dimensions	Finish
766-1120	7W	67	3000K	110°	Ø110*125.5	Ø125 x 140mm	Graphite
766-1124	7W	135	3000K	99°	Ø110*125.5	Ø125 x 140mm	Graphite
766-1128	7W	188	3000K	70°	Ø110*125.5	Ø125 x 140mm	Graphite



## Spot Light

Body in powder coated die cast aluminium  
 Clear glass diffuser with silicone gasket  
 Internal electronic driver



h(m)	D(m)	Em(lx)
1.0	0.4	1365
2.0	0.8	341
3.0	1.2	152

6W

h(m)	D(m)	Em(lx)
1.0	0.7	569
2.0	1.4	142
3.0	2.1	63

7W

<b>V</b> 230V	<b>IP</b> 65	<b>CRI</b> ≥80	 Clear	 LED	<b>PF</b> ≥0.5
------------------	-----------------	-------------------	--	--	-------------------

## Specification

Model No	Power	Lumens	CCT	Beam Angle	Cut-Out	Dimensions	Finish
766-6000	6W	280	3000K	24°	NA	Ø72 x D100 x H390mm	Graphite
766-6004	7W	396	3000K	39°	NA	Ø72 x D100 x H390mm	Graphite



## Spot Light

Body in powder coated die cast aluminium  
 Clear glass diffuser with silicone gasket  
 Internal electronic driver



h(m)	D(m)	Em(lx)
1.0	0.7	367
2.0	1.4	92
3.0	2.1	41

7W

h(m)	D(m)	Em(lx)
1.0	0.8	1005
2.0	1.6	251
3.0	2.4	112

15W

<b>V</b> 230V	<b>IP</b> 65	<b>CRI</b> ≥80	 Clear	 LED	<b>PF</b> ≥0.5
------------------	-----------------	-------------------	--	--	-------------------

## Specification

Model No	Power	Lumens	CCT	Beam Angle	Cut-Out	Dimensions	Finish
766-6020	7W	372	3000K	37°	NA	Ø73 x D106 x H380mm	Graphite
766-6024	15W	607	3000K	45°	NA	Ø73 x D106 x H380mm	Graphite



## Spot Light

Body in powder coated die cast aluminium  
Clear glass diffuser with silicone gasket  
Internal electronic driver



h(m)	D(m)	Em(lx)
1.0	0.3	3397
2.0	0.6	849
3.0	0.9	377

<b>V</b> 230V	<b>IP</b> 65	<b>CRI</b> ≥80	Clear	LED	<b>PF</b> ≥0.8
------------------	-----------------	-------------------	-------	-----	-------------------

## Specification

Model No	Power	Lumens	CCT	Beam Angle	Cut-Out	Dimensions	Finish
766-6040	15W	921	3000K	24°	NA	Ø140 x D175 x H265 mm	Graphite



## Spot Light

---

Body in powder coated die cast aluminium  
 Clear glass diffuser with silicone gasket  
 Internal electronic driver



h(m)	D(m)	Em(lx)
1.0	0.5	3349
2.0	1.0	837
3.0	1.5	372

<b>V</b> 230V	<b>IP</b> 65	<b>CRI</b> ≥80	 Clear	 LED	<b>PF</b> ≥0.8
------------------	-----------------	-------------------	--	--	-------------------

## Specification

---

Model No	Power	Lumens	CCT	Beam Angle	Cut-Out	Dimensions	Finish
766-6060	24W	1000	3000K	29°	NA	Ø140 x D175 xH265mm	Graphite



## Spot Light

---

Body in powder coated die cast aluminium  
 Clear glass diffuser with silicone gasket  
 Internal electronic driver



h(m)	D(m)	Em(lx)
1.0	0.5	1005
2.0	1.0	251
3.0	1.5	112

<b>V</b> 230V	<b>IP</b> 65	<b>CRI</b> ≥80	 Clear	 LED	<b>PF</b> ≥0.9
------------------	-----------------	-------------------	--	--	-------------------

## Specification

---

Model No	Power	Lumens	CCT	Beam Angle	Cut-Out	Dimensions	Finish
766-6080	12W	779	3000K	29°	NA	W110 x D65 x H225	Graphite



## Spot Light

---

Body in powder coated die cast aluminium  
 Clear glass diffuser with silicone gasket  
 Internal electronic driver



h(m)	D(m)	Em(lx)
1.0	0.9	1574
2.0	1.8	394
3.0	2.7	175

<b>V</b> 230V	<b>IP</b> 65	<b>CRI</b> ≥80	 Clear	 LED	<b>PF</b> ≥0.9
------------------	-----------------	-------------------	--	--	-------------------

## Specification

---

Model No	Power	Lumens	CCT	Beam Angle	Cut-Out	Dimensions	Finish
766-6100	16W	1000	3000K	49°	NA	L155 x W155 x H162 mm	Graphite





## Bollard

---

Body in powder coated die cast aluminium  
 Clear glass diffuser with silicone gasket  
 Internal electronic driver



h(m)	D(m)	Em(lx)
1.0	0.7	1
2.0	1.4	0
3.0	2.1	0

<b>V</b> 230V	<b>IP</b> 54	<b>CRI</b> ≥80	 Frost	 LED	<b>PF</b> ≥0.8
------------------	-----------------	-------------------	--	--	-------------------

## Specification

---

Model No	Power	Lumens	CCT	Beam Angle	Cut-Out	Dimensions	Finish
768-1000	7W	258	3000K	41°	NA	L75 x W75 xH600mm	Graphite
768-1001	7W	258	3000K	41°	NA	L75 x W75 xH600mm	Silver



## Bollard

---

Body in powder coated die cast aluminium  
 Frosted polycarbonate diffuser with silicone gasket  
 Internal electronic driver



h(m)	D(m)	Em(lx)
1.0	2.7	70
2.0	5.4	18
3.0	8.1	8

<b>V</b> 230V	<b>IP</b> 54	<b>CRI</b> ≥80	 Frost	 LED	<b>PF</b> ≥0.9
------------------	-----------------	-------------------	--	--	-------------------

## Specification

---

Model No	Power	Lumens	CCT	Beam Angle	Cut-Out	Dimensions	Finish
768-1020	8W	367	3000K	106°	NA	L128 x W143 x H650mm	Graphite
768-1021	8W	367	3000K	106°	NA	L128 x W143 x H650mm	Silver



## Bollard

---

Body in powder coated die cast aluminium  
Opal polycarbonate diffuser with silicone gasket  
Internal electronic driver



h(m)	D(m)	Em(lx)
1.0	4.1	13
2.0	8.2	3
3.0	12.3	1

<b>V</b> 230V	<b>IP</b> 54	<b>CRI</b> ≥80	 Opal	 LED	<b>PF</b> ≥0.9
------------------	-----------------	-------------------	---	--	-------------------

## Specification

---

Model No	Power	Lumens	CCT	Beam Angle	Cut-Out	Dimensions	Finish
768-1040	15W	461	3000K	270°	NA	L108 x W108 x H650mm	Graphite
768-1041	15W	461	3000K	270°	NA	L108 x W108 x H650mm	Silver



## Bollard

Body in powder coated die cast aluminium  
 Clear polycarbonate diffuser with silicone gasket  
 Internal electronic driver



h(m)	D(m)	Em(lx)
1.0	0.9	12
2.0	1.8	3
3.0	2.8	1

<b>V</b> 230V	<b>IP</b> 54	<b>CRI</b> ≥ 80	 Clear	 LED	<b>PF</b> ≥ 0.9
------------------	-----------------	--------------------	--	--	--------------------

## Specification

Model No	Power	Lumens	CCT	Beam Angle	Cut-Out	Dimensions	Finish
768-1060	15W	368	3000K	270°	NA	Ø120 x H265mm	Graphite
768-1061	15W	368	3000K	270°	NA	Ø120 x H265mm	Silver



## Bollard

---

Body in powder coated die cast aluminium  
 Clear glass diffuser with silicone gasket  
 Internal electronic driver



h(m)	D(m)	Em(lx)
1.0	0.9	12
2.0	1.8	3
3.0	2.7	1

<b>V</b> 230V	<b>IP</b> 54	<b>CRI</b> ≥80	 Clear	 LED	<b>PF</b> ≥0.8
------------------	-----------------	-------------------	--	--	-------------------

## Specification

---

Model No	Power	Lumens	CCT	Beam Angle	Cut-Out	Dimensions	Finish
768-1080	7W	397	3000K	41°	NA	Ø90 x H200mm	Graphite
768-1081	7W	397	3000K	41°	NA	Ø90 x H200mm	Silver
766-1082	7W	397	3000K	41°	NA	Ø90 x H200mm	White



## Bollard

---

Body in powder coated die cast aluminium  
 Clear glass diffuser with silicone gasket  
 Internal electronic driver



h(m)	D(m)	Em(lx)
1.0	0.7	9
2.0	1.4	2
3.0	2.1	1

<b>V</b> 230V	<b>IP</b> 54	<b>CRI</b> ≥80	 Clear	 LED	<b>PF</b> ≥0.8
------------------	-----------------	-------------------	--	--	-------------------

## Specification

---

Model No	Power	Lumens	CCT	Beam Angle	Cut-Out	Dimensions	Finish
768-1100	7W	400	3000K	38°	NA	L108 x W108 x H200 mm	Graphite
768-1101	7W	400	3000K	38°	NA	L108 x W108 x H200 mm	Silver
768-1102	7W	400	3000K	38°	NA	L108 x W108 x H200 mm	White



## Bollard

---

Body in powder coated die cast aluminium  
Opal polycarbonate diffuser with silicone gasket  
Internal electronic driver



h(m)	D(m)	Em(lx)
1.0	3.1	21
2.0	6.2	5
3.0	9.3	2

<b>V</b> 230V	<b>IP</b> 65	<b>CRI</b> ≥80	<b>Opal</b>	<b>LED</b>	<b>PF</b> ≥0.9
------------------	-----------------	-------------------	-------------	------------	-------------------

## Specification

---

Model No	Power	Lumens	CCT	Beam Angle	Cut-Out	Dimensions	Finish
768-1120	19W	737	3000K	81°	NA	L220 x W220 x H245mm	Graphite
768-1121	19W	737	3000K	81°	NA	L220 x W220 x H245mm	Silver
768-1122	19W	737	3000K	115°	NA	L220 x W220 x H245mm	White



## Bollard

Body in powder coated die cast aluminium  
Opal polycarbonate diffuser with silicone gasket  
Internal electronic driver



h(m)	D(m)	Em(lx)
1.0	4.1	13
2.0	8.2	3
3.0	12.3	1

<b>V</b> 230V	<b>IP</b> 54	<b>CRI</b> ≥80	 Opal	 LED	<b>PF</b> ≥0.9
------------------	-----------------	-------------------	---	--	-------------------

## Specification

Model No	Power	Lumens	CCT	Beam Angle	Cut-Out	Dimensions	Finish
774-1160	15W	461	3000K	270°	NA	L148 x W108 x H245 mm	Graphite
774-1161	15W	461	3000K	270°	NA	L148 x W108 x H245 mm	Silver
774-1163	15W	461	3000K	270°	NA	L148 x W108 x H245 mm	White





## Post Top

---

Body in powder coated die cast aluminium  
Opal polycarbonate diffuser with silicone gasket  
Internal electronic driver



h(m)	D(m)	Em(lx)	18W
1.0	2.1	290	
2.0	4.2	73	
3.0	6.3	32	

h(m)	D(m)	Em(lx)	36W
1.0	2.85	556	
2.0	5.7	139	
3.0	8.55	62	

<b>V</b> 230V	<b>IP</b> 54	<b>CRI</b> ≥80	Opal	LED	<b>PF</b> ≥0.9
------------------	-----------------	-------------------	------	-----	-------------------

## Specification

---

Model No	Power	Lumens	CCT	Beam Angle	Cut-Out	Dimensions	Finish
770-1020	18W	510	3000K	107°	NA	Ø200 x H1150mm	Graphite
770-1024	36W	1104	3000K	107°	NA	Ø200 x H1150mm	Graphite



## Post Top

---

Body in powder coated die cast aluminium  
 Frosted polycarbonate diffuser with silicone gasket  
 Internal electronic driver



h(m)	D(m)	Em(lx)
1.0	1.0	474
2.0	2.0	119
3.0	3.0	53

<b>V</b> 230V	<b>IP</b> 54	<b>CRI</b> ≥80	 Frost	 LED	<b>PF</b> ≥0.9
------------------	-----------------	-------------------	--	--	-------------------

## Specification

---

Model No	Power	Lumens	CCT	Beam Angle	Cut-Out	Dimensions	Finish
770-1000	24W	732	3000K	54°	NA	Ø300 x H2200mm	Graphite



## Wall Surface Downlight

Body in powder coated die cast aluminium  
Clear Glass diffuser with silicone gasket  
Internal electronic driver

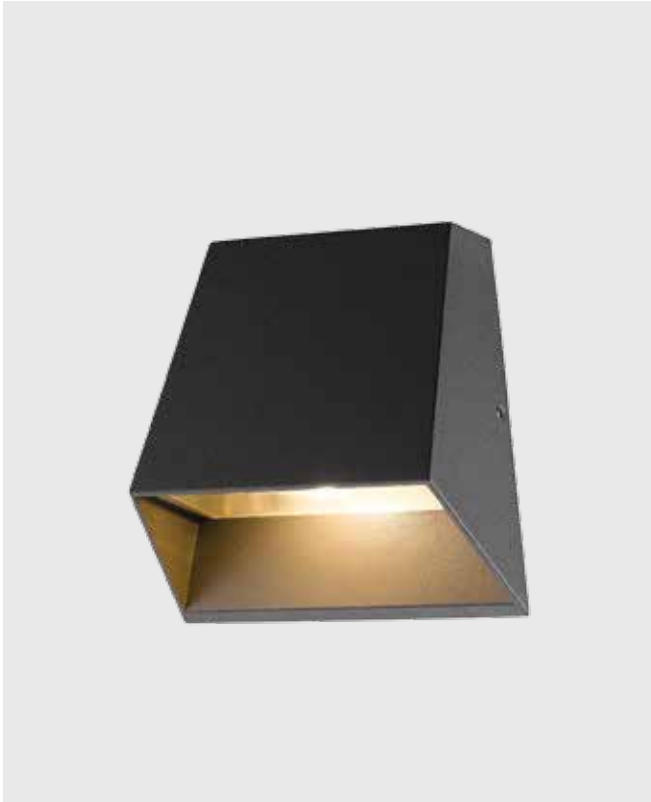


h(m)	D(m)	Em(lx)
1.0	1.7	45
2.0	3.4	11
3.0	5.1	5

<b>V</b> 230V	<b>IP</b> 54	<b>CRI</b> ≥80	 Clear	 LED	<b>PF</b> ≥0.9
------------------	-----------------	-------------------	--	--	-------------------

## Specification

Model No	Power	Lumens	CCT	Beam Angle	Cut-Out	Dimensions	Finish
774-1000	9W	105lm	3000K	78°	NA	109X63X173	Graphite



## Wall Surface Downlight

---

Body in powder coated die cast aluminium  
 Clear polycarbonate diffuser with silicone gasket  
 Internal electronic driver



h(m)	D(m)	Em(lx)
1.0	1.8	72
2.0	3.6	18
3.0	5.4	8

<b>V</b> 230V	<b>IP</b> 54	<b>CRI</b> ≥80	 Clear	 LED	<b>PF</b> ≥0.9
------------------	-----------------	-------------------	--	--	-------------------

## Specification

---

Model No	Power	Lumens	CCT	Beam Angle	Cut-Out	Dimensions	Finish
774-1020	7W	344	3000K	108°	NA	L125 x D63 x H125 mm	Graphite



## Wall Surface Downlight

---

Body in powder coated die cast aluminium  
 Clear polycarbonate diffuser with silicone gasket  
 Internal electronic driver



h(m)	D(m)	Em(lx)
1.0	1.2	49
2.0	2.4	12
3.0	3.6	5

<b>V</b> 230V	<b>IP</b> 54	<b>CRI</b> ≥80	 Clear	 LED	<b>PF</b> ≥0.9
------------------	-----------------	-------------------	--	--	-------------------

### Specification

---

Model No	Power	Lumens	CCT	Beam Angle	Cut-Out	Dimensions	Finish
774-1040	2 X 4.5W	210	3000K	50°	NA	L90 x W43 X H125 mm	Graphite



## Wall Surface Downlight

---

Body in powder coated die cast aluminium  
 Clear polycarbonate diffuser with silicone gasket  
 Internal electronic driver



h(m)	D(m)	Em(lx)
1.0	1.9	86
2.0	3.8	22
3.0	5.7	10

<b>V</b> 230V	<b>IP</b> 54	<b>CRI</b> ≥80	 Clear	 LED	<b>PF</b> ≥0.9
------------------	-----------------	-------------------	--	--	-------------------

## Specification

---

Model No	Power	Lumens	CCT	Beam Angle	Cut-Out	Dimensions	Finish
774-1060	9W	285	3000K	90°	NA	L110 x D90 x H90 mm	Graphite
774-1063	9W	285	3000K	90°	NA	L110 x D90 x H90 mm	White



## Wall Surface Downlight

---

Body in powder coated die cast aluminium  
 Clear polycarbonate diffuser with silicone gasket  
 Internal electronic driver



h(m)	D(m)	Em(lx)
1.0	2.1	55
2.0	4.2	14
3.0	6.3	6

<b>V</b> 230V	<b>IP</b> 54	<b>CRI</b> ≥80	 Clear	 LED	<b>PF</b> ≥0.5
------------------	-----------------	-------------------	--	--	-------------------

## Specification

---

Model No	Power	Lumens	CCT	Beam Angle	Cut-Out	Dimensions	Finish
774-1100	6W	260	3000K	30°	NA	Ø130 x D68mm	Graphite
774-1103	6W	260	3000K	30°	NA	Ø130 x D68mm	White



## Wall Surface Downlight

---

Body in powder coated die cast aluminium  
 Clear polycarbonate diffuser with silicone gasket  
 Internal electronic driver



h(m)	D(m)	Em(lx)
1.0	0.4	1792
2.0	0.8	448
3.0	1.2	199

<b>V</b> 230V	<b>IP</b> 54	<b>CRI</b> ≥80	 Clear	 LED	<b>PF</b> ≥0.9
------------------	-----------------	-------------------	--	--	-------------------

## Specification

---

Model No	Power	Lumens	CCT	Beam Angle	Cut-Out	Dimensions	Finish
774-1080	2 x 7W	541	3000K	25°	NA	Ø135 x H130 mm	Graphite
774-1087	14W	966	3000K	25°	NA	Ø135 x H130 mm	White





## Wall Surface Light

---

Body in powder coated die cast aluminium  
 Clear polycarbonate diifuser with silicone gasket  
 Internal electronic driver



h(m)	D(m)	Em(lx)
1.0	0.9	12
2.0	1.8	3
3.0	2.7	1

<b>V</b> 230V	<b>IP</b> 54	<b>CRI</b> ≥80	 Clear	 LED	<b>PF</b> ≥0.9
------------------	-----------------	-------------------	--	--	-------------------

### Specification

---

Model No	Power	Lumens	CCT	Beam Angle	Cut-Out	Dimensions	Finish
774-1120	7W	359	3000K	36°	NA	Ø90 x H160 mm	Graphite
774-1121	7W	359	3000K	36°	NA	Ø90 x H160 mm	Silver
774-1123	7W	359	3000K	36°	NA	Ø90 x H160 mm	White



## Wall Surface Light

---

Body in powder coated die cast aluminium  
 Clear polycarbonate diifuser with silicone gasket  
 Internal electronic driver



h(m)	D(m)	Em(lx)
1.0	0.7	12
2.0	1.4	3
3.0	2.1	1

<b>V</b> 230V	<b>IP</b> 54	<b>CRI</b> ≥80	 Clear	 LED	<b>PF</b> ≥0.9
------------------	-----------------	-------------------	--	--	-------------------

## Specification

---

Model No	Power	Lumens	CCT	Beam Angle	Cut-Out	Dimensions	Finish
774-1140	7W	353	3000K	36°	NA	L108 x W108 x H160mm	Graphite
774-1141	7W	353	3000K	36°	NA	L108 x W108 x H160mm	Silver
774-1143	7W	353	3000K	36°	NA	L108 x W108 x H160mm	White



## Wall Surface Light

---

Body in powder coated die cast aluminium  
Clear polycarbonate diifuser with silicone gasket  
Internal electronic driver



h(m)	D(m)	Em(lx)
1.0	2.6	13
2.0	5.2	3
3.0	7.8	1

<b>V</b> 230V	<b>IP</b> 54	<b>CRI</b> ≥80	<b>Opal</b>	<b>LED</b>	<b>PF</b> ≥0.9
------------------	-----------------	-------------------	-------------	------------	-------------------

## Specification

---

Model No	Power	Lumens	CCT	Beam Angle	Cut-Out	Dimensions	Finish
774-1200	7W	293	3000K	97°	NA	Ø210 x H212mm	Graphite



## Wall Surface Light

Body in powder coated die cast aluminium  
 Clear polycarbonate diifuser with silicone gasket  
 Internal electronic driver



h(m)	D(m)	Em(lx)
1.0	0.9	12
2.0	1.8	3
3.0	2.7	1

<b>V</b> 230V	<b>IP</b> 54	<b>CRI</b> ≥80	 Clear	 LED	<b>PF</b> ≥0.9
------------------	-----------------	-------------------	--	--	-------------------

## Specification

Model No	Power	Lumens	CCT	Beam Angle	Cut-Out	Dimensions	Finish
774-1180	15W	368lm	3000K	82°	NA	Ø120 x H260mm	Graphite
774-1181	15W	368lm	3000K	82°	NA	Ø120 x H260mm	Silver
774-1183	15W	368lm	3000K	82°	NA	Ø120 x H260mm	White



## Wall Recess Lights

---

Body in powder coated die cast aluminium  
 Clear glass diffuser with silicone gasket  
 Internal electronic driver



h(m)	D(m)	Em(lx)
1.0	1.0	11
2.0	2.0	3
3.0	3.0	1

<b>V</b> 230V	<b>IP</b> 65	<b>CRI</b> ≥80	 Clear	 LED	<b>PF</b> ≥0.5
------------------	-----------------	-------------------	--	--	-------------------

## Specification

---

Model No	Power	Lumens	CCT	Beam Angle	Cut-Out	Dimensions	Finish
774-1241	3W	591lm	3000K	20°	170.5*65.5*72	L66 x D73 x H171 mm	Silver

## Wall Recess Mounted Floor Wash Lights



Body in powder coated die cast aluminium  
 Clear glass diffuser with silicone gasket  
 Internal electronic driver



h(m)	D(m)	Em(lx)
1.0	1.0	76
2.0	2.0	19
3.0	3.0	8

<b>V</b> 230V	<b>IP</b> 65	<b>CRI</b> ≥80	 Frost	 LED	<b>PF</b> ≥0.5
------------------	-----------------	-------------------	--	--	-------------------

### Specification

Model No	Power	Lumens	CCT	Beam Angle	Cut-Out	Dimensions	Finish
774-1261	3.6W	99	3000K	48°	72*105*59	L75 x D65 x H107 mm	Silver



## Wall Recess Lights

---

Body in powder coated die cast aluminium  
 Clear glass diffuser with silicone gasket  
 Internal electronic driver



h(m)	D(m)	Em(lx)
1.0	1.2	6
2.0	2.4	2
3.0	3.6	1

<b>V</b> 230V	<b>IP</b> 65	<b>CRI</b> ≥80	 Clear	 LED	<b>PF</b> ≥0.5
------------------	-----------------	-------------------	--	--	-------------------

### Specification

---

Model No	Power	Lumens	CCT	Beam Angle	Cut-Out	Dimensions	Finish
774-1281	3W	54	3000K	62°	Ø91*82	L95 x W95 x H81 mm	Silver



## Wall Recess Lights

---

Body in powder coated die cast aluminium  
 Clear glass diffuser with silicone gasket  
 Internal electronic driver



h(m)	D(m)	Em(lx)
1.0	1	10
2.0	2	3
3.0	3	1

<b>V</b> 230V	<b>IP</b> 65	<b>CRI</b> ≥80	 Clear	 LED	<b>PF</b> ≥0.5
------------------	-----------------	-------------------	--	--	-------------------

## Specification

---

Model No	Power	Lumens	CCT	Beam Angle	Cut-Out	Dimensions	Finish
774-1301	3W	23	3000K	56°	NA	L95 x W95 x H81mm	Silver





### Wall Recess Lights

---

Body in powder coated die cast aluminium  
 Clear glass diffuser with silicone gasket  
 Internal electronic driver



h(m)	D(m)	Em(lx)
1.0	1.4	51
2.0	2.8	13
3.0	4.2	6

<b>V</b> 230V	<b>IP</b> 54	<b>CRI</b> ≥80	 Frost	 LED	<b>PF</b> ≥0.5
------------------	-----------------	-------------------	--	--	-------------------

### Specification

---

Model No	Power	Lumens	CCT	Beam Angle	Cut-Out	Dimensions	Finish
774-1320	4W	160	3000K	72°	NA	L220 x W60 x H100 mm	Graphite

# Contact us.

## **OREL UK**

4th Floor,  
7/10, Chandos Street,  
London,  
W1G 9DQ,  
United Kingdom.  
T: +44 20 358 22933  
E: UK@orelcorp.com

## **OREL USA**

21515 Hawthorn Blvd  
Suite 200, Torrance  
CA 90503  
U.S.A.  
General :+ 424 337 1898  
Fax :+ 424 201 2201  
Email: USA@orelcorp.com

## **OREL Asia Pacific**

8, Port Kembla Drive,  
Bibra Lake,  
WA 6163, Perth,  
Australia.  
T: +61 89202800  
E: APAC@orelcorp.com

## **OREL Middle East**

Shop No.3, Riviera Hotel Building,  
Deira, Dubai,  
United Arab Emirates.  
T: +97 155 424 2722  
+97 142 972 636  
E: ME@orelcorp.com

## **OREL South Asia**

A 74 FIEE,  
OKHLA Industrial Area - Phase II,  
New Delhi - 110020,  
India.  
T: +91 114 106 9843  
E: SA@orelcorp.com

## **OREL South East Asia**

72, Eunos Avenue 7,  
#06 - 03,  
Singapore Handicrafts Building,  
Singapore 409570.  
T: +65 6365 4620  
E: FE@orelcorp.com



**OREL CORPORATION (HQ)**

49, Sri Jinarathana Road, Colombo 2, Sri Lanka. T : +94 114 792 100 | E : hq@orelcorp.com



4 792056 234251

May 2017