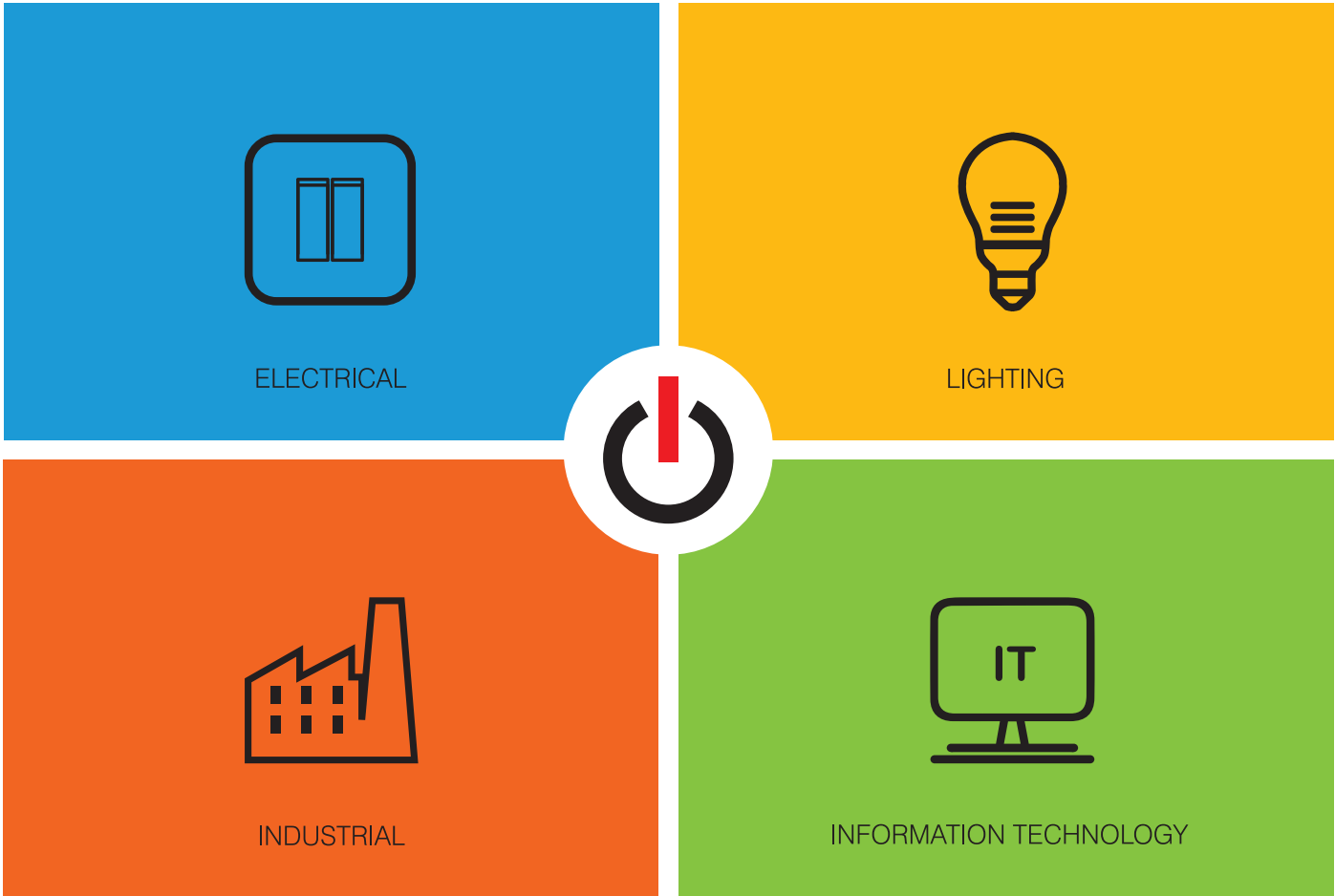




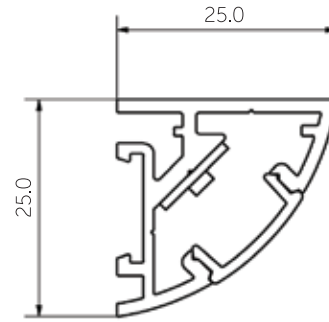
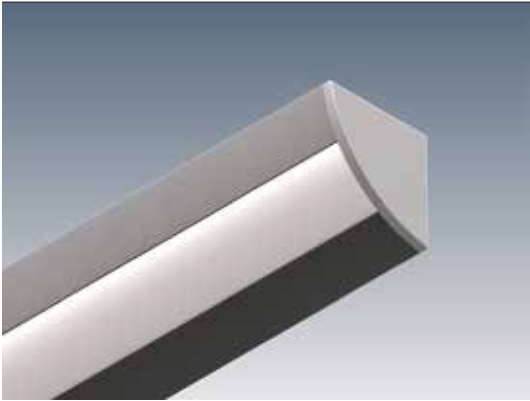
Simplicity and Elegance takes center stage
in our Linear Architectural Lighting

35 SBU's Converge into Four Verticles to Create one Super Power



About us	<p>Our Vision "To create a billion dollar global electrical brand"</p>	<p>Our Mission "To add more to life with electricity"</p> <p>At Orel Corporation, the makers of Orange Electric, we believe that more can be added to life with electricity. We put together the best human ingenuity with the world's leading technology to solve your toughest challenges with electricity and to save energy. Today, we are lighting up one country at a time. We are not just dreaming about it. With every passing day, we make it happen. One day soon, we will switch on the world.</p>
	<p>Credo No matter how lucrative it may sound, we shall never engage in businesses that deals in arms and ammunition, alcohol and tobacco, livestock, gambling or any other business that undermines one's social values.</p>	
	<p>Our Culture At Orange Electric, we value innovation and technology. But we place a higher values in making our people better human beings. Good old fashioned values like being simple, honest and straight forward will take you a long way with us.</p>	

Angle Andy 25



The Angle Andy 25 profile is perfect for mounting in corners of joinery, corners of perpendicular walls or into the corner of a wall and ceiling. Angle Andy 25 features one smooth side, meaning it is not confined to corner mounting, but can also be mounted with one side of the extrusion visible - ideal for wall washing or glass cabinetry.

MOUNTING OPTIONS	DIFFUSER OPTIONS	LED STRIP OPTIONS
Surface mounted	Opal	7.8W - 3000K
Rod suspended		7.8W - 4000K
		17W - 3000K
		17W - 4000K

- Photometric files available on request.
 - Other LED strip options are available on request, including 4W and 21W.
 - 5 year manufacturer's warranty for LED strip & drivers (subject to conditions).

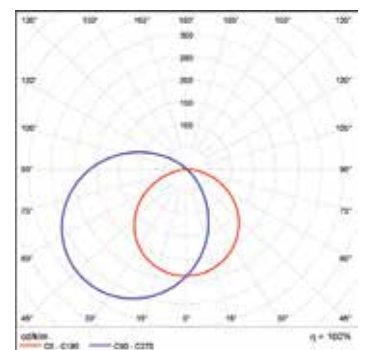
ACCESSORIES



JMC-12 Joinery mounting clip JN-ST-12 Straight joiner JN-90-12 90 degree joiner SRK-1-S / SRK-1-W Rod suspension kit (rod not incl.) SRK-6-S / SRK-6-W Rod suspension kit (rod not incl.) ROD-0.5M / ROD-1M / ROD-2M Suspension rod - 0.5m, 1m, 2m

ADDITIONAL INFORMATION

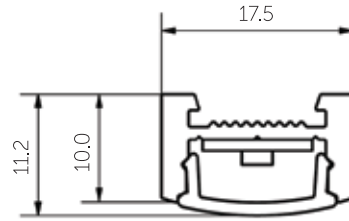
Applications	Task lighting in kitchen cabinetry, lighting for shelving or display units, hallway lighting, wall-washing.
Installation	Interior or exterior (with IP65 rated LED strip).
Materials	Extruded aluminium body, polycarbonate diffuser, AES plastic end caps.
Finish	Natural silver anodised or custom powder coat.
Light source	LED ribbon strip.
Power supply	24V DC - remote driver options ranging from 12W up to 240W.
Dimmable	Various options available, please enquire.



Polar curve for 1890 lumen LED strip with opal diffuser.



Downhill Dan 10



The Downhill Dan 10 extrusion is our most compact profile. At only 10mm deep, it's ideal for tight spaces and minimal visual impact. Downhill Dan 10 can be surface mounted, recessed or suspended. Both wire and rod suspension options are available for the Downhill Dan 10 extrusion. Downhill Dan 10 can be cut and joined to create any length required.

MOUNTING OPTIONS	DIFFUSER OPTIONS	LED STRIP OPTIONS
Surface mounted	Opal	7.8W - 3000K
		7.8W - 4000K
		17W - 3000K
		17W - 4000K
		<ul style="list-style-type: none"> - Photometric files available on request. - Other LED strip options are available on request, including 4W and 21W. - 5 year manufacturer's warranty for LED strip & drivers (subject to conditions).

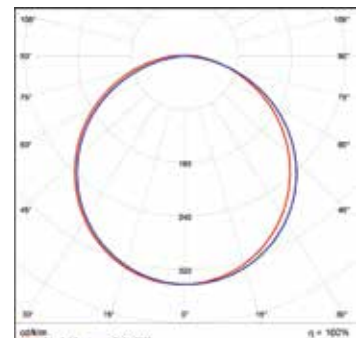
ACCESSORIES



NOTE: Wire or rod suspension accessories are available on request.

ADDITIONAL INFORMATION

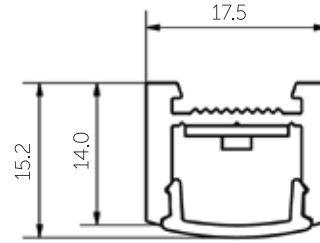
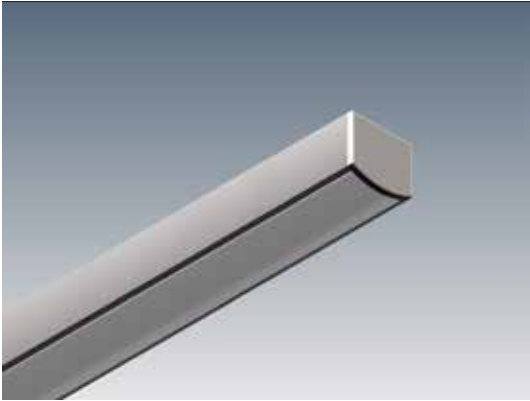
Applications	Task lighting in kitchen cabinetry, shelving or display units, concealed architectural details.
Installation	Interior only.
Materials	Extruded aluminium body, polycarbonate diffuser, AES plastic end caps.
Finish	Natural silver anodised or custom powder coat.
Light source	LED ribbon strip.
Power supply	24V DC - remote driver options ranging from 12W up to 240W.
Dimmable	Various options available, please enquire.



Polar curve for 1340 lumen LED strip with opal diffuser.



Downhill Dan 14



The Downhill Dan 14 extrusion is a compact solution providing dot-free lighting. A versatile system suitable for various mounting options, Downhill Dan 14 can be surface mounted, recessed and suspended. Both wire and rod suspension options are available for the Downhill Dan 14 extrusion and the recessing system for plasterboard ceilings and walls, creates a perfect trimless recessed finish every time.

MOUNTING OPTIONS	DIFFUSER OPTIONS	LED STRIP OPTIONS
Surface mounted	Opal	7.8W - 3000K
Recessed		7.8W - 4000K
Wire suspended		17W - 3000K
Rod suspended		17W - 4000K

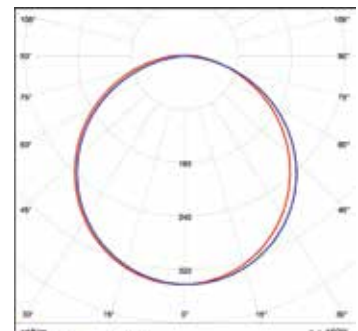
- Photometric files available on request.
 - Other LED strip options are available on request, including 4W and 21W.
 - 5 year manufacturer's warranty for LED strip & drivers (subject to conditions).

ACCESSORIES

JMC-12 Joinery mounting clip	JN-ST Straight joiner	JN-90 90 degree joiner	CB-60-R-S / CB-60-R-W Cable base 60, recessed	CB-80-SM-S / CB-80-SM-W Cable base 80, surface mount	SWIK-1-2M / SWIK-1-4M Wire suspension	SRK-1-S / SRK-1-W Rod suspension kit (rod not incl)
SRK-6-S / SRK-6-W Rod suspension kit (rod not incl)	ROD-0.5M / ROD-1M / ROD-2M Suspension rod - 0.5m, 1m, 2m	MB-ADJ Adjustable mounting bracket				

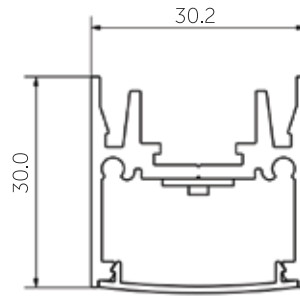
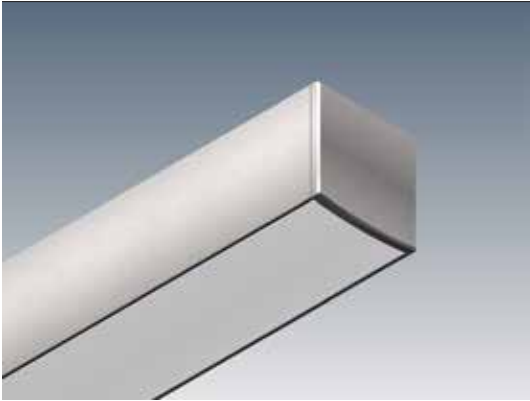
ADDITIONAL INFORMATION

Applications Task lighting in kitchen cabinetry, shelving or display units, hallways
 Installation Interior or exterior (with IP65 rated LED strip).
 Materials Extruded aluminium body, polycarbonate diffuser, AES plastic end caps.
 Finish Natural silver anodised or custom powder coat.
 Light source LED ribbon strip.
 Power supply 24V DC - remote driver options ranging from 12W up to 240W.
 Dimmable Various options available, please enquire.



Polar curve for 1890 lumen LED strip with opal diffuser.



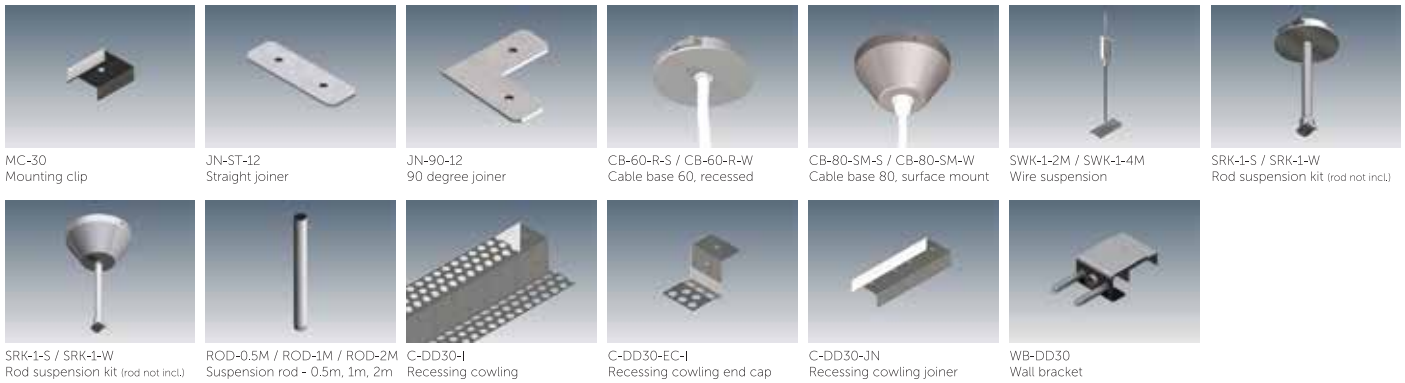


The Downhill Dan 30 extrusion is a versatile and powerful downlighting system. Utilizing up to a 30W per metre LED strip, the profile is ideal for applications where maximum light output is key. A versatile system suitable for various mounting options, Downhill Dan 30 can be surface mounted, recessed and suspended. Both wire and rod suspension options are available and the cowling accessory for plastered ceilings and walls creates a beautiful trimless finish.

MOUNTING OPTIONS	DIFFUSER OPTIONS	LED STRIP OPTIONS	
Surface mounted	Opal	7.8W - 3000K	21W - 3000K
Wire suspended		7.8W - 4000K	21W - 4000K
Rod suspended		17W - 3000K	
Recessed		17W - 4000K	
Wall mounted			

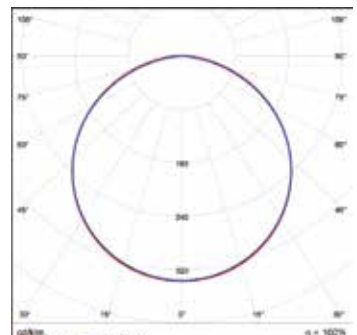
- Photometric files available on request.
 - Other LED strip options are available on request, including 4W.
 - 5 year manufacturer's warranty for LED strip & drivers (subject to conditions).

ACCESSORIES



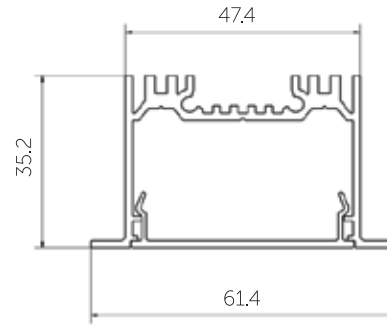
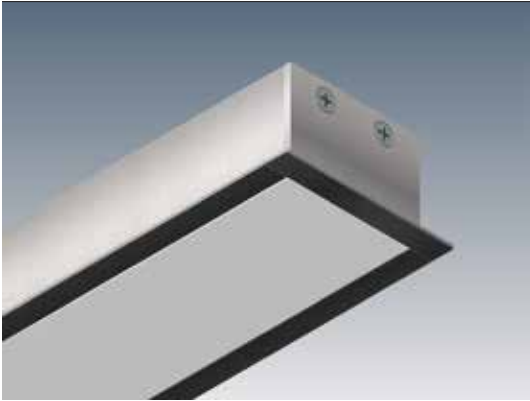
ADDITIONAL INFORMATION

Applications: General downlighting in kitchens, living rooms, dining rooms, reception counters.
 Installation: Interior or exterior (with IP65 rated LED strip).
 Materials: Extruded aluminium body, polycarbonate diffuser, aluminium end caps.
 Finish: Natural silver anodised or custom powder coat.
 Light source: LED ribbon strip.
 Power supply: 24V DC - remote driver options ranging from 12W up to 240W.
 Dimmable: Various options available, please enquire.



Polar curve for 2250 lumen LED strip with opal diffuser.



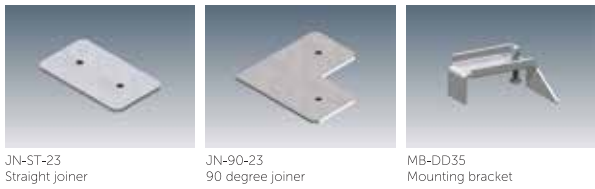


Downhill Dan 35 is a quick-to-install, recessed down-lighter profile. The asymmetric mounting bracket makes this product unique and means that it can be installed with the LED strip already attached. Downhill Dan 35 has plenty of power for a huge range of applications. Silver anodised or white powder coat are standard finish options.

MOUNTING OPTIONS	DIFFUSER OPTIONS	LED STRIP OPTIONS	
Recessed	Satin	7.8W - 3000K	21W - 3000K
		7.8W - 4000K	21W - 4000K
		17W - 3000K	
		17W - 4000K	

- Photometric files available on request.
 - Other LED strip options are available on request, including 4W.
 - 5 year manufacturer's warranty for LED strip & drivers (subject to conditions).

ACCESSORIES



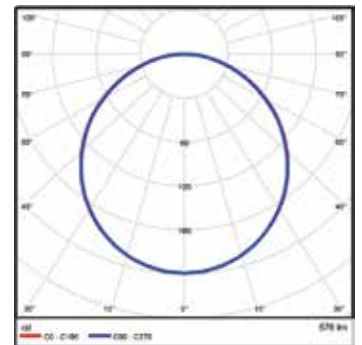
JN-ST-23
Straight joiner

JN-90-23
90 degree joiner

MB-DD35
Mounting bracket

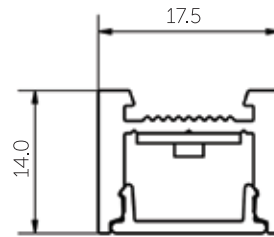
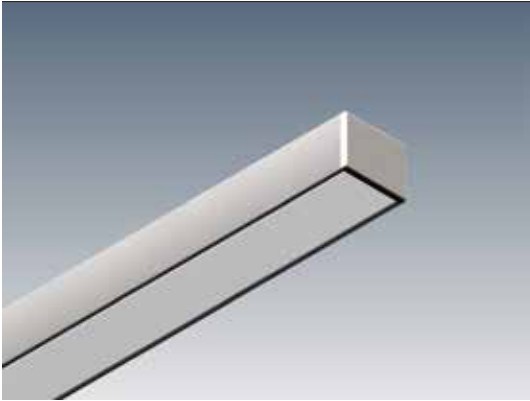
ADDITIONAL INFORMATION

Applications	General downlighting in kitchens, living rooms, dining rooms, reception counters, lobbies.
Installation	Interior or exterior (with IP65 rated LED strip).
Materials	Extruded aluminium body, PMMA diffuser, aluminium end caps.
Finish	Natural silver anodised, Mannex White powder coat or custom powder coat colours.
Light source	LED ribbon strip.
Power supply	24V DC - remote driver options ranging from 12W up to 240W.
Dimmable	Various options available, please enquire.



Polar curve for 2250 lumen LED strip with satin diffuser.





Much like its close cousin, Downhill Dan 14, Flat Freddie 14 is a compact solution providing "dot-free" lighting. A versatile system suitable for various mounting options, Flat Freddie 14 can be surface mounted, recessed or suspended. Both wire and rod suspension options are available and a simple method of recessing into plasterboard ceilings provides a clean, trimless look.

MOUNTING OPTIONS	DIFFUSER OPTIONS	LED STRIP OPTIONS
Surface mounted	Opal	7.8W - 3000K
Recessed		7.8W - 4000K
Wire suspended		17W - 3000K
Rod suspended		17W - 4000K

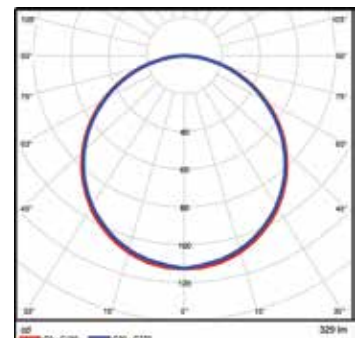
- Photometric files available on request.
 - Other LED strip options are available on request, including 4W and 21W.
 - 5 year manufacturer's warranty for LED strip & drivers (subject to conditions).

ACCESSORIES

JMC-12 Joinery mounting clip	JN-ST Straight joiner	JN-90 90 degree joiner	CB-60-R-S / CB-60-R-W Cable base 60, recessed	CB-80-SM-S / CB-80-SM-W Cable base 80, surface mount	SWK-1-2M / SWK-1-4M Wire suspension	SRK-1-S / SRK-1-W Rod suspension kit (rod not incl.)
SRK-6-S / SRK-6-W Rod suspension kit (rod not incl.)	ROD-0.5M / ROD-1M / ROD-2M Suspension rod - 0.5m, 1m, 2m	MB-ADJ Adjustable mounting bracket				

ADDITIONAL INFORMATION

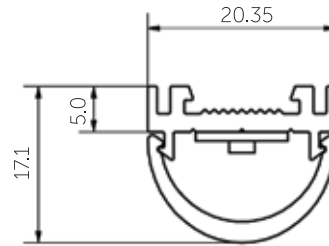
Applications Task lighting in kitchen cabinetry, shelving or display units, hallways
 Installation Interior or exterior (with IP65 rated LED strip).
 Materials Extruded aluminium body, polycarbonate diffuser, AES plastic end caps.
 Finish Natural silver anodised or custom powder coat.
 Light source LED ribbon strip.
 Power supply 24V DC - remote driver options ranging from 12W up to 240W.
 Dimmable Various options available, please enquire.



Polar curve for 1340 lumen LED strip with opal diffuser.



Sideways Sally 5C



Sideways Sally 5C has many uses as a surface mounted profile solution, whether it is used as a slim-line mirror light in a bathroom, discrete task lighting under a shelf or tucked into a pelmet. It can even be suspended on wire or rod suspensions as a super-slim pendant light. With diffuser options of both curved and rectangular, this profile is sure to be a great addition to any specifier's tool kit.

MOUNTING OPTIONS	DIFFUSER OPTIONS	LED STRIP OPTIONS
Surface mounted	Satin	7.8W - 3000K
Wire suspended		7.8W - 4000K
Rod suspended		17W - 3000K
		17W - 4000K

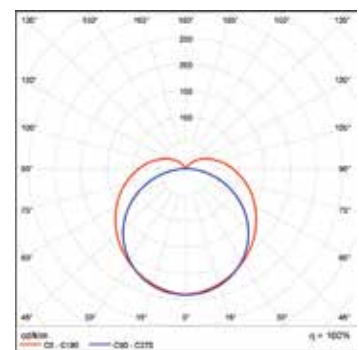
- Photometric files available on request.
 - Other LED strip options are available on request, including 4W and 21W.
 - 5 year manufacturer's warranty for LED strip & drivers (subject to conditions).

ACCESSORIES



ADDITIONAL INFORMATION

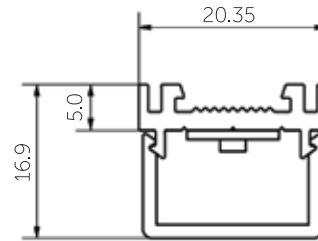
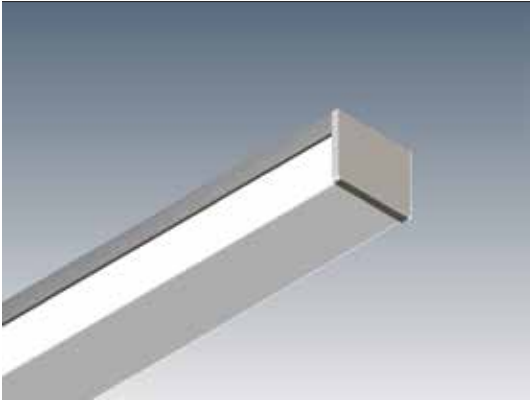
Applications: Mirror lighting, kitchen joinery, display shelving.
 Installation: Interior or exterior (with IP65 rated LED strip).
 Materials: Extruded aluminium body, PMMA diffuser, AES plastic end caps.
 Finish: Natural silver anodised or custom powder coat.
 Light source: LED ribbon strip.
 Power supply: 24V DC - remote driver options ranging from 12W up to 240W.
 Dimmable: Various options available, please enquire.



Polar curve for 1340 lumen LED strip with satin diffuser.



Sideways Sally 5R



Sideways Sally 5R has many uses as a surface mounted profile solution, whether it is used as a slim-line mirror light in a bathroom, discrete task lighting under a shelf or tucked into a pelmet. It can even be suspended on wire or rod suspensions as a super-slim pendant light. With diffuser options of both curved and rectangular, this profile is sure to be a great addition to any specifier's tool kit.

MOUNTING OPTIONS	DIFFUSER OPTIONS	LED STRIP OPTIONS
Surface mounted	Satin	7.8W - 3000K
Wire suspended		7.8W - 4000K
Rod suspended		17W - 3000K
		17W - 4000K

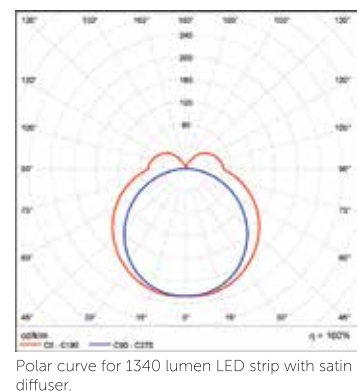
- Photometric files available on request.
 - Other LED strip options are available on request, including 4W and 21W.
 - 5 year manufacturer's warranty for LED strip & drivers (subject to conditions).

ACCESSORIES

JMC-12 Joinery mounting clip	JN-ST Straight joiner	JN-90 90 degree joiner	CB-60-R-S / CB-60-R-W Cable base 60, recessed	CB-80-SM-S / CB-80-SM-W Cable base 80, surface mount	SWIK-1-2M / SWIK-1-4M Wire suspension	SRK-1-S / SRK-1-W Rod suspension kit (rod not incl)
SRK-6-S / SRK-6-W Rod suspension kit (rod not incl)	ROD-0.5M / ROD-1M / ROD-2M Suspension rod - 0.5m, 1m, 2m	MB-ADJ Adjustable mounting bracket				

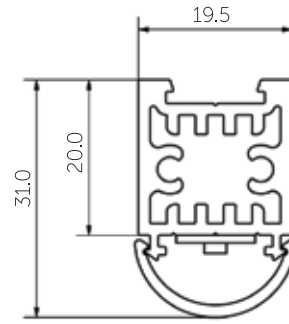
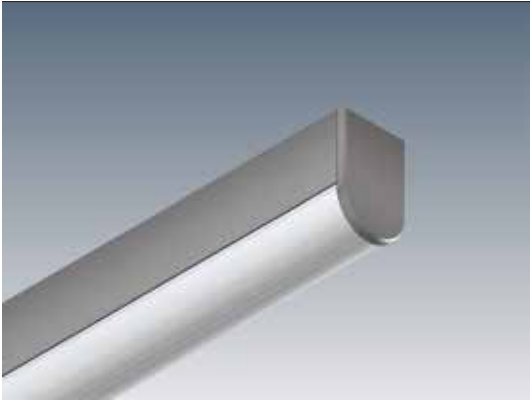
ADDITIONAL INFORMATION

Applications	Mirror lighting, kitchen joinery, display shelving.
Installation	Interior or exterior (with IP65 rated LED strip).
Materials	Extruded aluminium body, PMMA diffuser, AES plastic end caps.
Finish	Natural silver anodised or custom powder coat.
Light source	LED ribbon strip.
Power supply	24V DC - remote driver options ranging from 12W up to 240W.
Dimmable	Various options available, please enquire.





Sideways Sally 20C



The Sideways Sally 20C extrusion is a compact uplight/downlight solution providing powerful LED lighting. A versatile system suitable for various mounting options, Sideways Sally 20C can be surface mounted, wall mounted and suspended. The concealed mounting clip provides a quick and secure fixing to joinery. Both wire and rod suspension options are available for the Sideways Sally 20C extrusion.

MOUNTING OPTIONS	DIFFUSER OPTIONS	LED STRIP OPTIONS	
Surface mounted	Satin	7.8W - 3000K	21W - 3000K
Wire suspended		7.8W - 4000K	21W - 4000K
Rod suspended		17W - 3000K	
Wall mounted		17W - 4000K	

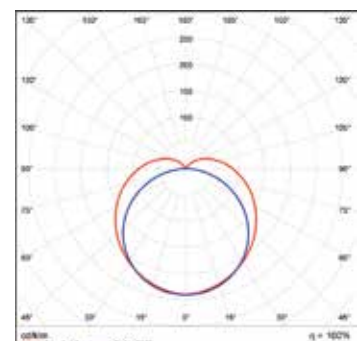
- Photometric files available on request.
- Other LED strip options are available on request, including 4W.
- 5 year manufacturer's warranty for LED strip & drivers (subject to conditions).

ACCESSORIES

JMC-12 Joinery mounting clip	JN-ST-12 Straight joiner	JN-90-12 90 degree joiner	CB-60-R-S / CB-60-R-W Cable base 60, recessed	CB-80-SM-S / CB-80-SM-W Cable base 80, surface mount	SWK-1-2M / SWK-1-4M Wire suspension	SRK-1-S / SRK-1-W Rod suspension kit (rod not incl)
SRK-6-S / SRK-6-W Rod suspension kit (rod not incl)	ROD-0.5M / ROD-1M / ROD-2M Suspension rod - 0.5m, 1m, 2m	WB-SS20 Wall bracket				

ADDITIONAL INFORMATION

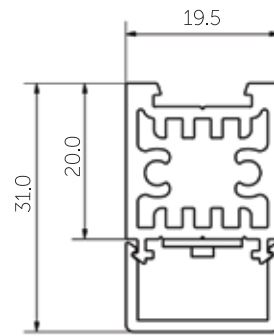
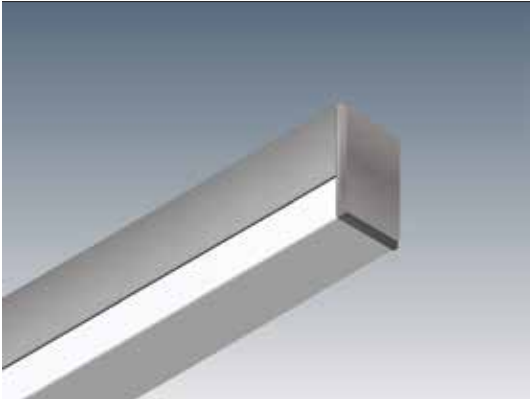
Applications	Task lighting over kitchen islands or reception counters, mirror lighting.
Installation	Interior or exterior (with IP65 rated LED strip).
Materials	Extruded aluminium body, PMMA diffuser, aluminium end caps.
Finish	Natural silver anodised or custom powder coat.
Light source	LED ribbon strip.
Power supply	24V DC - remote driver options ranging from 12W up to 240W.
Dimmable	Various options available, please enquire.



Polar curve for 1890 lumen LED strip with satin diffuser.



Sideways Sally 20R



The Sideways Sally 20R extrusion is a compact uplight/downlight solution providing powerful LED lighting. A versatile system suitable for various mounting options, Sideways Sally 20R can be surface mounted, wall mounted and suspended. The concealed mounting clip provides a quick and secure fixing to joinery. Both wire and rod suspension options are available for the Sideways Sally 20R extrusion.

MOUNTING OPTIONS	DIFFUSER OPTIONS	LED STRIP OPTIONS	
Surface mounted	Satin	7.8W - 3000K	21W - 3000K
Wire suspended		7.8W - 4000K	21W - 4000K
Rod suspended		17W - 3000K	
Wall mounted		17W - 4000K	

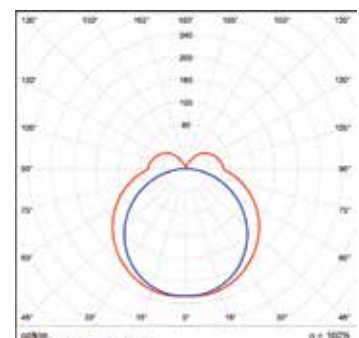
- Photometric files available on request.
- Other LED strip options are available on request, including 4W.
- 5 year manufacturer's warranty for LED strip & drivers (subject to conditions).

ACCESSORIES

JMC-12 Joinery mounting clip	JN-ST-12 Straight joiner	JN-90-12 90 degree joiner	CB-60-R-S / CB-60-R-W Cable base 60, recessed	CB-80-SM-S / CB-80-SM-W Cable base 80, surface mount	SWIK-1-2M / SWIK-1-4M Wire suspension	SRK-1-S / SRK-1-W Rod suspension kit (rod not incl)
SRK-6-S / SRK-6-W Rod suspension kit (rod not incl)	ROD-0.5M / ROD-1M / ROD-2M Suspension rod - 0.5m, 1m, 2m	WB-SS20 Wall bracket				

ADDITIONAL INFORMATION

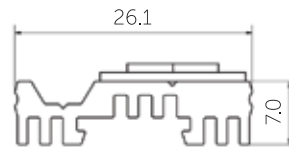
Applications	Task lighting over kitchen islands or reception counters, mirror lighting.
Installation	Interior or exterior (with IP65 rated LED strip).
Materials	Extruded aluminium body, PMMA diffuser, aluminium end caps.
Finish	Natural silver anodised or custom powder coat.
Light source	LED ribbon strip.
Power supply	24V DC - remote driver options ranging from 12W up to 240W.
Dimmable	Various options available, please enquire.



Polar curve for 1890 lumen LED strip with satin diffuser.



The Workforce Management Ltd
GS1 New Zealand Inc
ABC Business Sales
Heart Recruitment



Simple Simon 7 is designed to be just that – simple. It provides a heatsink for high-powered LED strips and offers a smooth, flat surface to affix the LED strip to. The asymmetric screw channel means the product can be installed with the LED strip already attached. Simple Simon 7 is ideal for mounting within coves and pelmets, or any application where the LED strip doesn't need to be diffused.

MOUNTING OPTIONS	DIFFUSER OPTIONS	LED STRIP OPTIONS	
Surface mounted	N/A	7.8W - 3000K	21W - 3000K
		7.8W - 4000K	21W - 4000K
		17W - 3000K	
		17W - 4000K	

- Photometric files available on request.
 - Other LED strip options are available on request, including 4W.
 - 5 year manufacturer's warranty for LED strip & drivers (subject to conditions).

ACCESSORIES



JN-ST-12
Straight joiner



JN-90-12
90 degree joiner

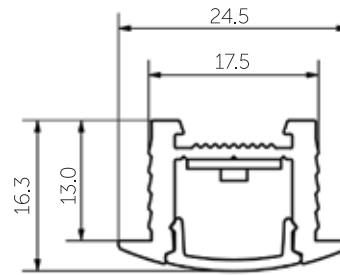
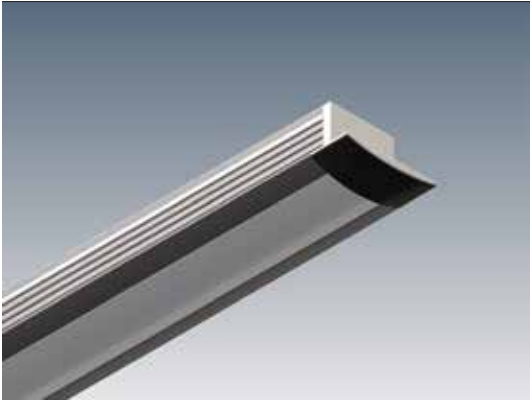


MB-ADJ
Adjustable mounting bracket

ADDITIONAL INFORMATION

Applications	Pelmets, coves, back-lighting for light boxes.
Installation	Interior only.
Materials	Extruded aluminium body.
Finish	Natural silver anodised.
Light source	LED ribbon strip.
Power supply	24V DC - remote driver options ranging from 12W up to 240W.
Dimmable	Various options available, please enquire.

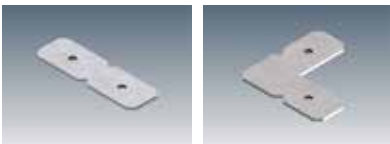




Trim Tim 13 has similar dimensions and features to Downhill Dan 14, including the added feature of recessing trims to cover the cut edges of joinery or plasterboard when recessing. Also featured are small ribs either side of the profile which allow Trim Tim 13 to be friction-fitted into an 18mm routed slot in joinery without the need for screws. The 13mm depth provides "dot-free" lighting in building materials as thin as 18mm.

MOUNTING OPTIONS	DIFFUSER OPTIONS	LED STRIP OPTIONS
Recessed	Opal	7.8W - 3000K
		7.8W - 4000K
		17W - 3000K
		17W - 4000K
		<ul style="list-style-type: none"> - Photometric files available on request. - Other LED strip options are available on request, including 4W and 21W. - 5 year manufacturer's warranty for LED strip & drivers (subject to conditions).

ACCESSORIES

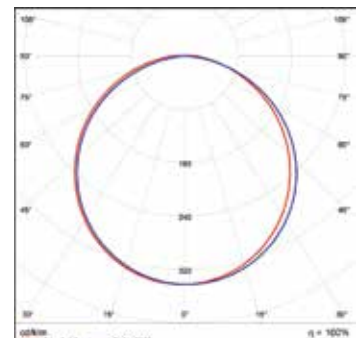


JN-ST
Straight joiner

JN-90
90 degree joiner

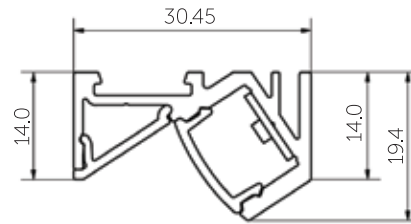
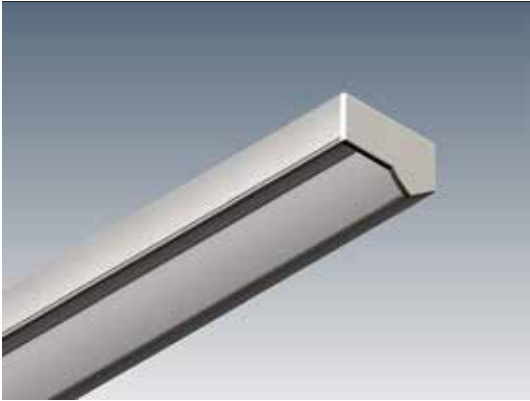
ADDITIONAL INFORMATION

Applications	Task lighting in kitchen cabinetry, lighting for shelving or display units.
Installation	Interior and exterior (with IP65 rated LED strip).
Materials	Extruded aluminium body, polycarbonate diffuser, AES plastic end caps.
Finish	Natural silver anodised or custom powder coat.
Light source	LED ribbon strip.
Power supply	24V DC - remote driver options ranging from 12W up to 240W.
Dimmable	Various options available, please enquire.



Polar curve for 1340 lumen LED strip with opal diffuser.





The Where's Ben 14 profile is the perfect solution for wall-washing, ceiling-washing or floor-washing. It creates an even wash of light on to a perpendicular surface meaning it is ideal for lighting art work, or brightening up dark walls or ceilings. Where's Ben 14 can be surface mounted or recessed.

MOUNTING OPTIONS
Surface mounted
Recessed

DIFFUSER OPTIONS
Opal

LED STRIP OPTIONS	
7.8W - 3000K	21W - 3000K
7.8W - 4000K	21W - 4000K
17W - 3000K	
17W - 4000K	

- Photometric files available on request.
- Other LED strip options are available on request, including 4W.
- 5 year manufacturer's warranty for LED strip & drivers (subject to conditions).

ACCESSORIES



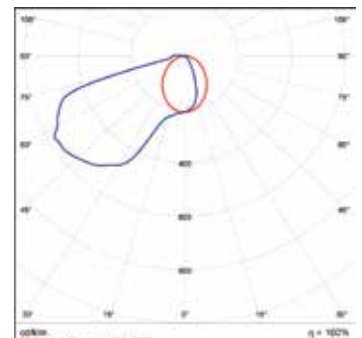
JN-ST-12
Straight joiner



JN-90-12
90 degree joiner

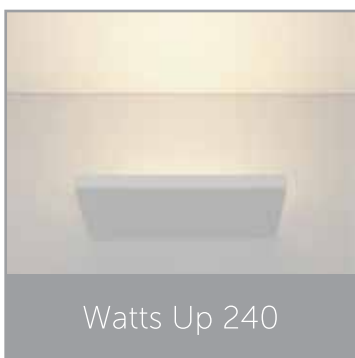
ADDITIONAL INFORMATION

Applications	Wall washing, uplight, lighting for shelving or display units, hallway lighting, lighting signage & art.
Installation	Interior and exterior (with IP65 rated LED strip).
Materials	Extruded aluminium body, polycarbonate diffuser, AES plastic end caps.
Finish	Natural silver anodised or custom powder coat.
Light source	LED ribbon strip.
Power supply	24V DC - remote driver options ranging from 12W up to 240W.
Dimmable	Various options available, please enquire.



Polar curve for 1890 lumen LED strip with clear diffuser.





Our customised range can be ordered from the nearest regional office

Contact us.

OREL UK

4th Floor,
7/10, Chandos Street,
London,
W1G 9DQ,
United Kingdom.
T: +44 20 358 22933
E: UK@orelcorp.com

OREL USA

21515 Hawthorn Blvd
Suite 200, Torrance
CA 90503
U.S.A.
General :+ 424 337 1898
Fax :+ 424 201 2201
Email: USA@orelcorp.com

OREL Asia Pacific

8, Port Kembla Drive,
Bibra Lake,
WA 6163, Perth,
Australia.
T: +61 89202800
E: APAC@orelcorp.com

OREL Middle East

Shop No.3, Riviera Hotel Building,
Deira, Dubai,
United Arab Emirates.
T: +97 155 424 2722
+97 142 972 636
E: ME@orelcorp.com

OREL South Asia

A 74 FIEE,
OKHLA Industrial Area - Phase II,
New Delhi - 110020,
India.
T: +91 114 106 9843
E: SA@orelcorp.com

OREL South East Asia

72, Eunost Avenue 7,
#06 - 03,
Singapore Handicrafts Building,
Singapore 409570.
T: +65 6365 4620
E: FE@orelcorp.com



OREL CORPORATION (HQ)

49, Sri Jinarathana Road, Colombo 2, Sri Lanka. T : +94 114 792 100 | E : hq@orelcorp.com

