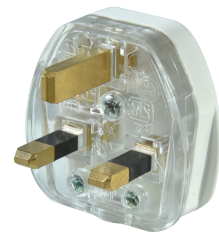


Plug Tops & Insulation Tapes



187-1022
5-Amp Plug Top*



187-1026
13-Amp Plug Top with Fuse

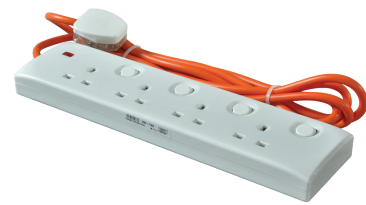


187-1030
15-Amp Plug Top*



187-1072
Insulation Tape - 10m

Trailing sockets



187-1001	187-1004	187-1008	187-1010
-----------------	-----------------	-----------------	-----------------

13-Amp Trailing Socket with 13-Amp Fused Plug Top
3m Wire | 5m Wire | 7m Wire | 10m Wire



187-1013	187-1015	187-1017	187-1019
-----------------	-----------------	-----------------	-----------------

13-Amp Multi Trailing Socket with 13-Amp Fused Plug Top*
3m Wire | 5m Wire | 7m Wire | 10m Wire

Adapters/Converters & Ceiling Roses



187-1036
13-Amp 3-Way Fused
Adapter with Neon



187-1035
13-Amp - 5-Amp Converter



187-1049
10-Amp Ceiling Rose

*For international market only.

OREL

Empowering
Humanity

RANGE
ELECTRIC



Allied Accessories - The Perfect Alliance of Accessories

A wide variety of allied accessories to supplement your electrical projects involving our products that are trusted for quality around the world.

RANGE
ELECTRIC

OREL CORPORATION
49, Sri Jinarathana Road, Colombo 2, Sri Lanka. | T: +94 114 792 100 | E: sl@orel.com

OREL South East Asia - Singapore | T: +65 6970 5547 | sea@orel.com
OREL Middle East - U.A.E. | T: +971 4388 8722 | E: me@orel.com
OREL North America - U.S.A. | T: +130 5944 7710 | E: usa@orel.com



Oct 2023

www.orel.com

Lamp Holders & Electric Doorbells



187-1053
Lamp Holder
(Pendant-type)



187-1051
Straight Batten Holder



187-1052
Angle Batten Holder



187-1087
≥ 75dB Electric Door Bell



If the **switch is Orange Electric**,
why not the **mounting box** that it fits into?

Distribution Boxes



187-1055
10-Way Surface Mounting Distribution Box



187-1056
10-Way Sunk Mounting Distribution Box



187-1057
14-Way Surface Mounting Distribution Box



187-1058
14-Way Sunk Mounting Distribution Box



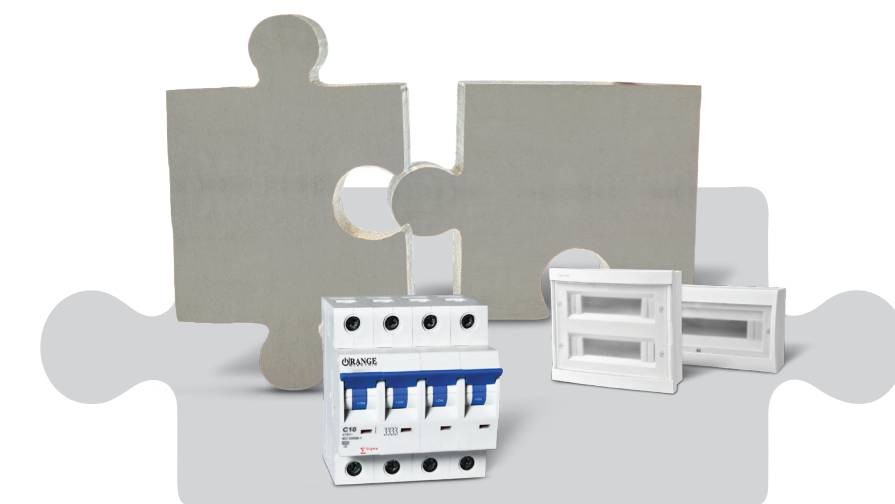
187-1059
18-Way Surface Mounting Distribution Box



187-1060
18-Way Sunk Mounting Distribution Box

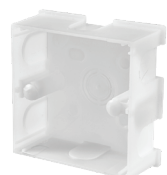


187-1062
28-Way Sunk Mounting Distribution Box

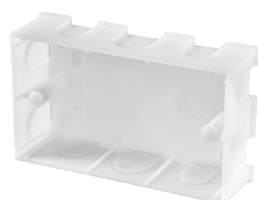


If the **circuit breaker is Orange Electric**,
why not the **distribution box** that it fits into?

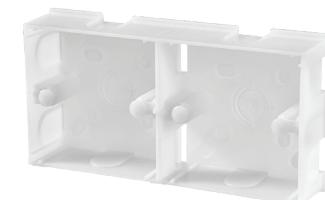
Mounting Boxes



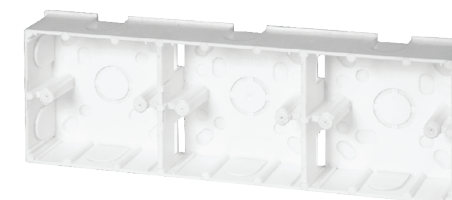
187-1042
Single Sunk Mounting Box
35mm Depth



187-1044
Twin Sunk Mounting Box
35mm Depth



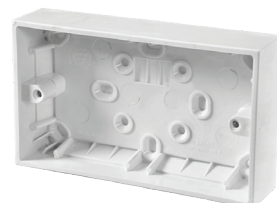
187-1043
Double Sunk Mounting Box
35mm Depth



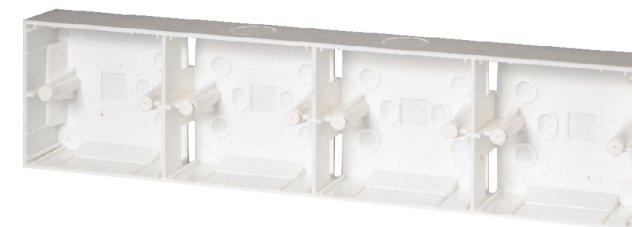
187-1047
3-Way Sunk Mounting Box
35mm Depth



187-1037
Single Surface Mounting Box
30mm Depth



187-1039
Twin Surface Mounting Box
30mm Depth



187-1041
4-Way Surface Mounting Box
30mm Depth



187-1038
Single Surface Mounting Box
36mm Depth



187-1040
Twin Surface Mounting Box
36mm Depth



If the **bulb is Orange Electric**,
why not the **holder** that it goes into?